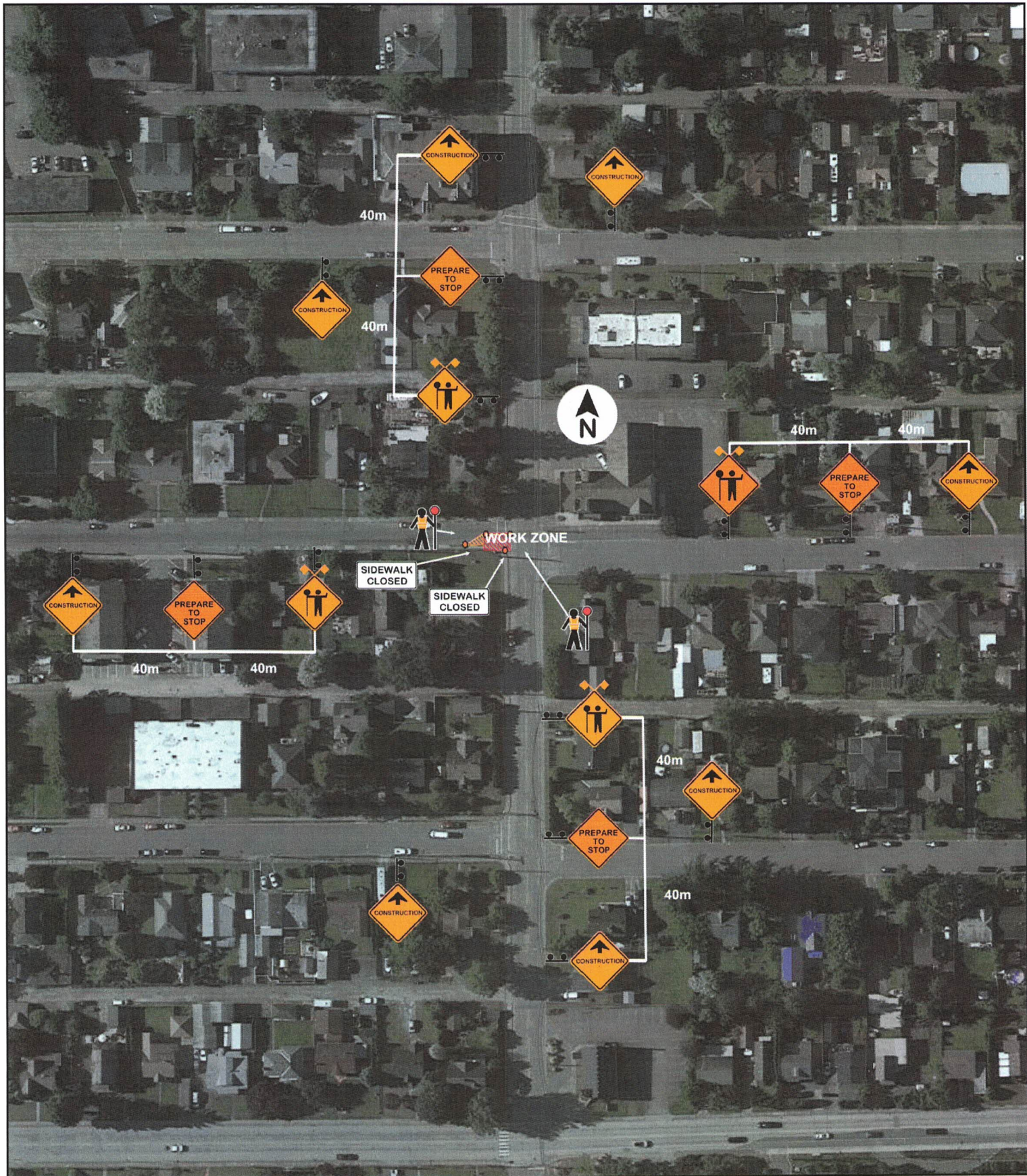


TMP 20 - City of Chilliwack Street Lighting 2020: Princess Ave @ Williams St Eastbound



**Figure 11.2: Intersection Lane Closure - Two-Lane, Two-Way Roadway with TCPs (Near Side)
- Short and Long Duration
TCPs on site to assist with vehicles, pedestrians, bicyclists and all others**

TMP 21 - City of Chilliwack Street Lighting 2020: Princess Ave @ Williams St Westbound

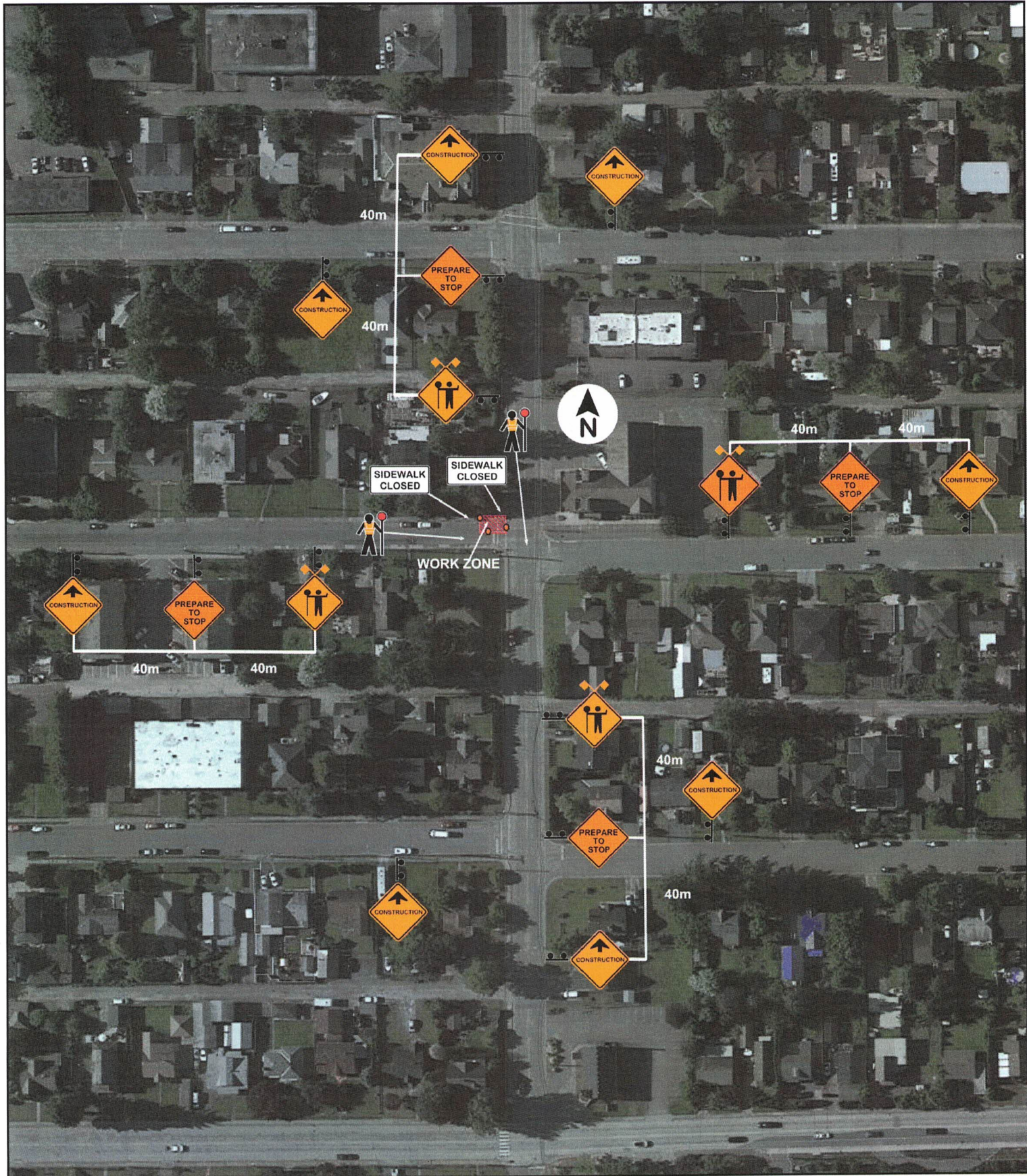


Figure 11.4: Intersection Lane Closure - Two-Lane, Two-Way Roadway with TCPs (Far Side) - Short and Long Duration
TCPs on site to assist with vehicles, pedestrians, bicyclists and all others